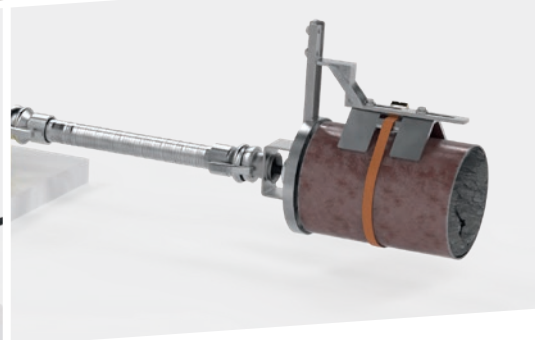


**HAMMELMANN®**



# PIPEMASTER THE PIPE CLEANING SYSTEM

A manually operated rotary unit for high-pressure hoses

Highest safety in every working situation

Easy adjustment of the hose direction

Seamless cleaning

For pipelines up to 300 m

Infinitely adjustable hose speed

Cleaning possible via pipe bridges



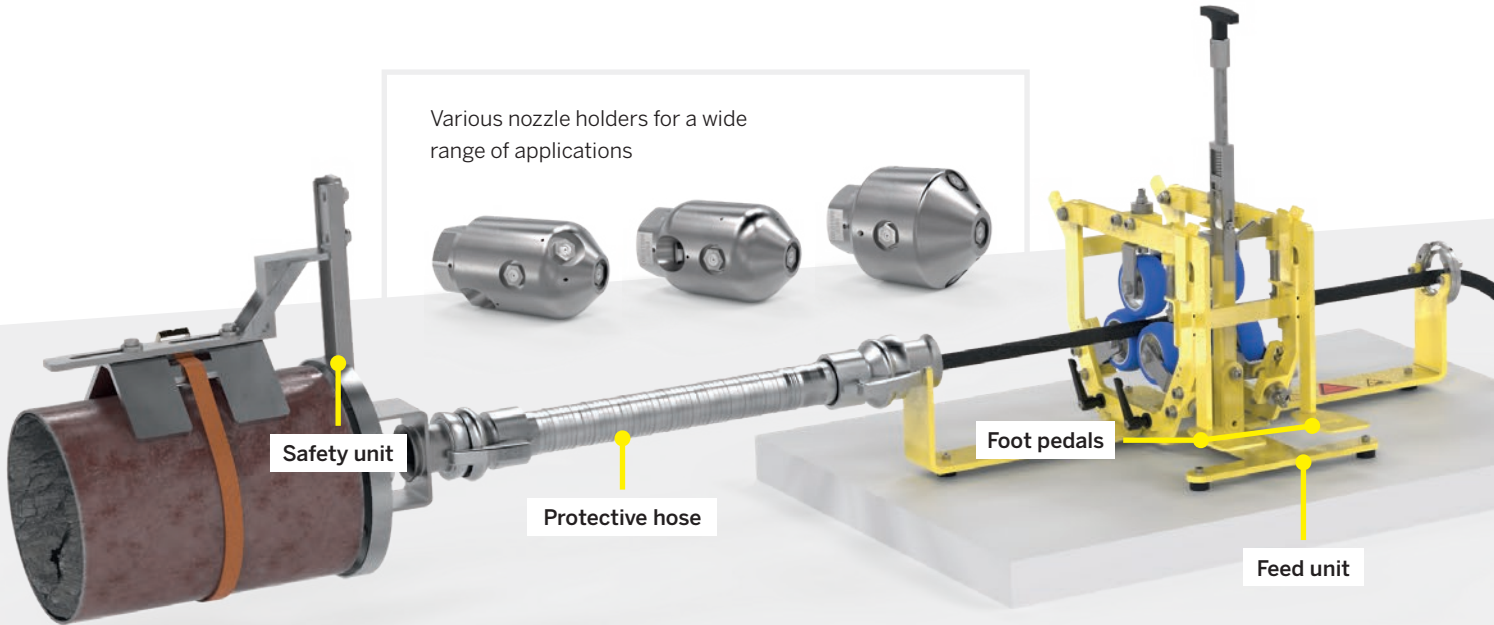
PIPEMASTER PIPE CLEANING SYSTEM

The PIPEMASTER is a manually operated rotating unit for high-pressure hoses. It is used in combination with cleaning nozzles to remove both soft and particularly hard deposits in straight or bent pipes and pipelines. As an alternative to self-rotating cleaning nozzles, rotation is achieved by the rotary motion of the high-pressure hose. Due to the low rotational speeds of the high-pressure hose, particularly hard deposits can be removed. The device can be handled easily and safely.



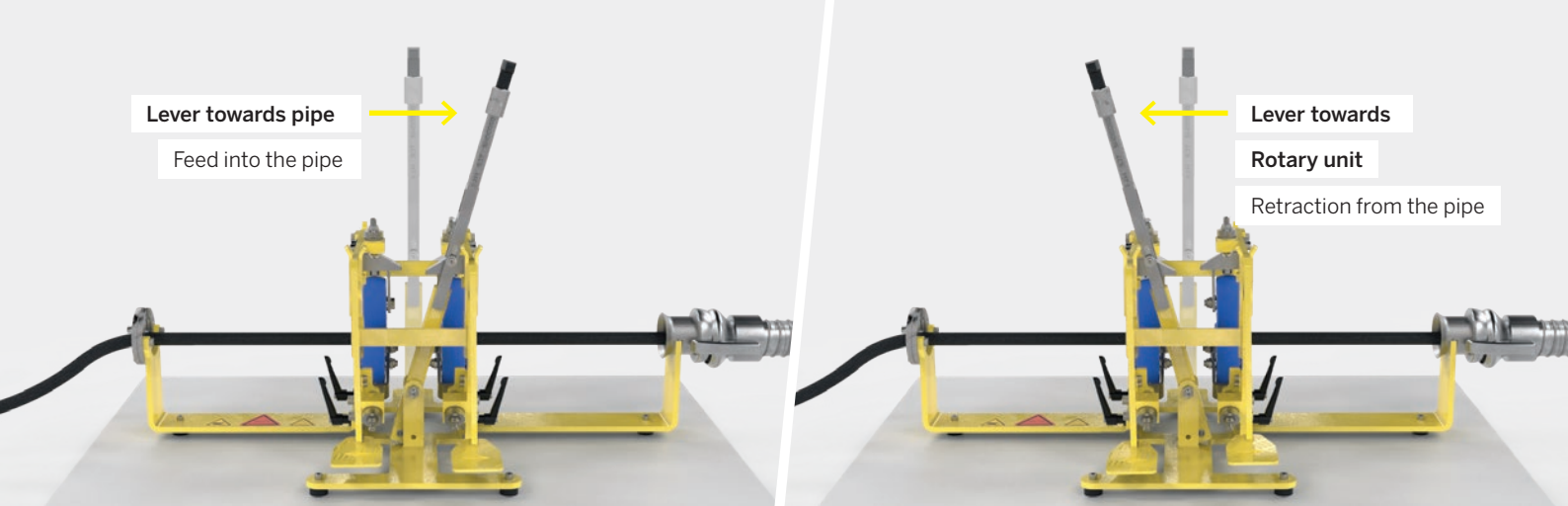
Model	Operating pressure	Weight	Pipe diameter	Air pressure
PIPEMASTER DN 13	up to 1800 bar	~ 130 kg	80 – 300 mm	5 – 7 bar
PIPEMASTER DN 20	up to 1600 bar	~ 133 kg	80 – 300 mm	5 – 7 bar

Motor power: 0,4 - 2,5 kW. Air pressure consumption at max. motor power: 47 - 195 m³/h.



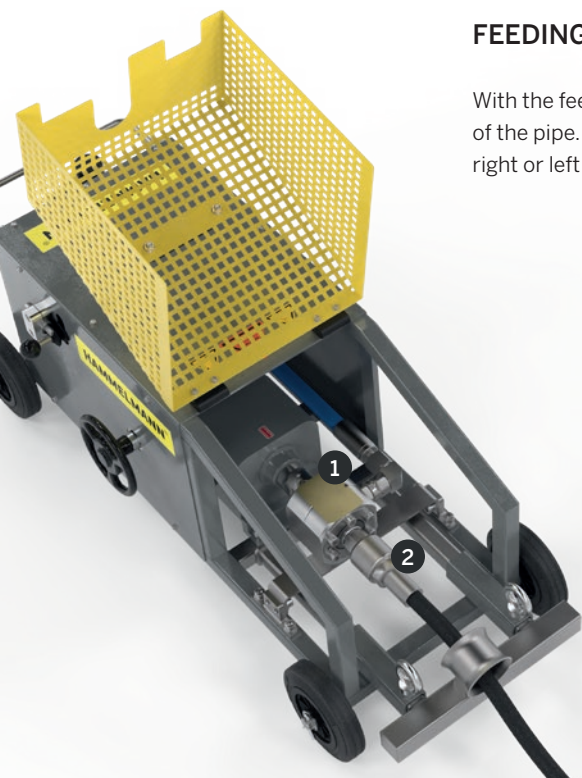
The **safety unit** is equipped with a quiver tube in which the cleaning nozzle is safely and securely located. From here, high-pressure cleaning can be carried out directly and pipes can be freed from deposits from very the first centimeter.

The respective foot pedal of the **feed unit** generates the feed via rotation of the high-pressure hose. The feed rate can be adjusted in 10° steps via the detent setting of the pressure rollers.



## FEEDING AND RETRACTING THE HIGH-PRESSURE HOSE

With the feed unit, the rotating high-pressure hose can be easily moved into and out of the pipe. To do this, the lever must be adjusted from the neutral position to the right or left accordingly. This is done quickly and easily during operation.



## ROTARY CONNECTION AND ROTARY JOINT

The **rotating connection 1** is safely located under the protective hood. The rotating connection is available as DN13 and DN20 version and offers operating pressures up to 3000 bar. For maximum safety, a **rotary joint 2** prevents the hose from running over the residue in the pipeline and being damaged in the event of a pump failure. The rotary joint only allows the hose to rotate above 300 bar. The hose is only set into rotation when sufficient water pressure is switched on.



The **rotary unit** is responsible for the hose rotation. The gearbox is pneumatically driven and infinitely variable.



Bypass radio remote control (RRC)

With the optional **bypass radio remote control**, you have the option of conveniently and quickly switching the water pressure on and off at the touch of a button.





## CERTIFICATES

- ISO 9001:2015
- ISO 14001:2015
- ISO 45001:2018
- ISO 50001:2018
- Achilles Certificate
- ASME Certificate
- SIR Certificate
- Others



### The free Hammelmann app

For iOS, Android and your browser

**Water Jetting Calculator:** [hammelmann.com/app](http://hammelmann.com/app)

**Hammelmann GmbH**  
Carl-Zeiss-Straße 6-8  
D-59302 Oelde

☎ (0) 25 22 / 76 - 0  
✉ [mail@hammelmann.de](mailto:mail@hammelmann.de)  
🌐 [www.hammelmann.com](http://www.hammelmann.com)



**HAMMELMANN®**