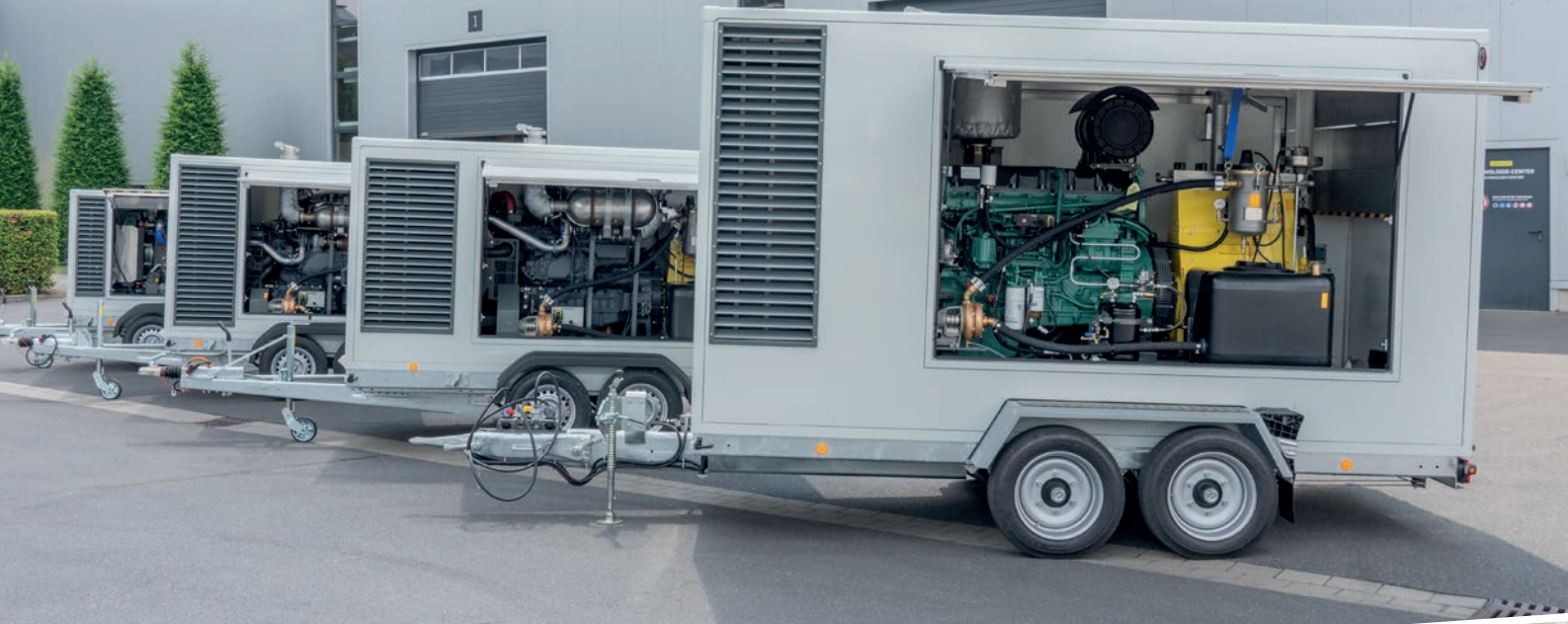


**HAMMELMANN®**



# AQUAJET®

## HIGH-PRESSURE PUMP UNITS

High-quality endurance runners

High energy savings

Full control

Great longevity

High mobility

Many variants

Sturdy industrial engine



# OUR MOBILE AQUAJET® MODELS

Our road-mobile AQUAJET® models combine high mobility with excellent performance. The heart of every AQUAJET® is a corresponding HDP high-pressure pump. The units are powered by a diesel engine from established manufacturers. The well thought-out system brings innumerable advantages and is available in different versions and performance classes.



## HIGH ENERGY SAVINGS

The AQUAJET® ultra high-pressure pump converts 95% of the shaft power into hydraulic energy



## FULL CONTROL

Alle wichtigen Betriebsdaten auf einen Blick. Einfache Bedienung, Überwachung und Düsenberechnung dank innovativer ES 4-Steuerung. Intuitiv und in vielen Sprachen.



## GREAT LONGEVITY

Long lifetime of all high-pressure components, optimal valve and sealing technology, use of top quality materials and precise series production with most modern machines.



## HIGH MOBILITY

High-quality tandem chassis with overrun brake and completely galvanized chassis and optional four-point lifting eyes for optimal positioning of the system.



## VARIOUS VERSIONS

AQUAJET® high-pressure pump units are available in a wide variety of designs and performance classes and are up to any challenge.



## STURDY INDUSTRIAL ENGINE

Economical industrial engines from brand manufacturers with current level 5 emissions certification.

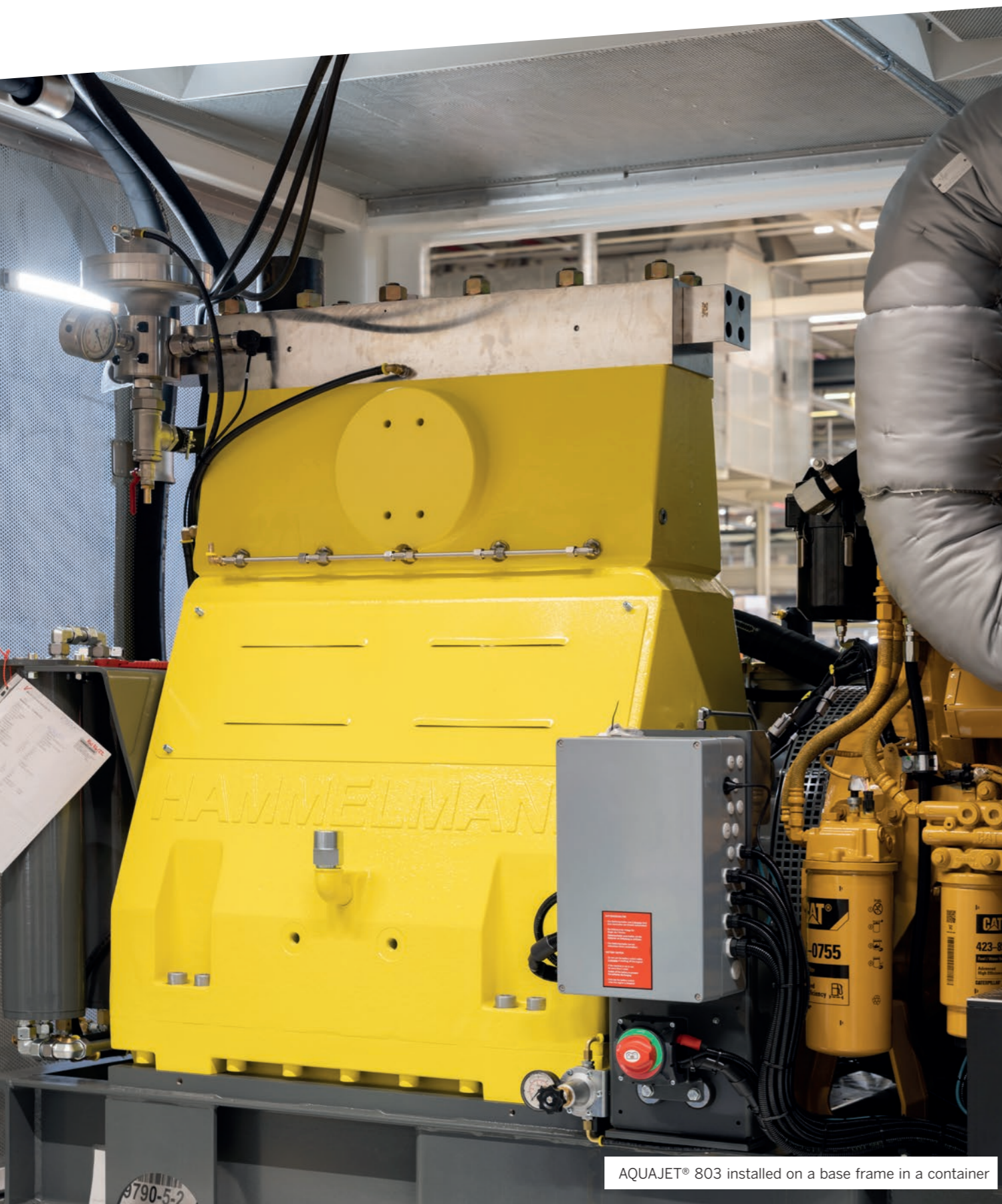






# WHAT DO ALL AQUAJET® MODELS HAVE IN COMMON?

Unparalleled strength and unique endurance! All AQUAJET® models work on the same principle: A Hammelmann high-pressure pump is driven by a high-performance motor and provides the power you need for your job. No matter whether as a road-mobile or stationary version, as a basic unit or installed in a container. You can rely on AQUAJET® units.



AQUAJET® 803 installed on a base frame in a container

## ENERGY SAVINGS THROUGH HIGH EFFICIENCY

- **High efficiency.** Hammelmann high pressure pumps convert 95% of the shaft power into hydraulic energy.
- **Very smooth running** due to low speed at maximum performance.
- **Low diesel consumption** due to modern engines.

## SAFE OPERATION

- **Everything under control!** Monitoring, control and nozzle calculation via the Hammelmann ES 4 control unit. Intuitive navigation in many languages. All important operating data at a glance.
- **Easy set-up** due to easily accessible supply and high pressure connections.

## THE ENDURANCE RUNNER IN TOP QUALITY

- **Long lifetime of all high-pressure components** due to optimal valve and sealing technology, use of top quality materials and precise series production with most modern machines.
- **Ideal corrosion protection** thanks to high-quality materials.
- **High operational reliability** and long maintenance intervals through the hermetical sealing of the gear end by a patented bellows sealing system.
- **„Dry pump design“:** thanks to the arrangement of all pressurized high pressure components inside the pump housing no water is wasted.
- **Significant operating cost advantage** thanks to the crank section with pressurized lubrication system which is designed for at least 25,000 operating hours under full load.
- **High reliability in continuous duty** due to the performance reserves of the high-pressure pump, drive engine and all components.

## STURDY INDUSTRIAL ENGINE

- **Economical industrial engines** in accordance with the current exhaust emission certification stage 5.
- **Ample power reserves:** Powerful motors, real pump performance, no compromises.

## HIGH MOBILITY

- **Low noise pump unit** due to super soundproofing
- **Environmentally safe operation** due to totally enclosed bottom tray made of aluminum.
- **Large fuel reserve.** Minimum of 8 hours operation possible due to the large internal fuel tank
- **High quality tandem chassis** with overrun brake. Chassis is completely galvanized
- **Easy to position** by means of 4 point lifting lugs or central single point lifting device (optional).
- **Very good ground clearance**
- **100 km/h approval possible**







## ES 4 – THE CLEVER CONTROL UNIT

- The ES 4 control offers a completely revised user interface and offers improved clarity and usability.
- Splashproof 10" high-resolution anti-glare touch display (1280x800 px).
- Additional keypad suitable for construction sites for operating the most important functions.
- Luminous and easy to use even with gloves.
- Engine speed, working pressure, fuel gauge at a glance.
- Communication via CAN bus - increased reliability because the number of electrical terminal points could be reduced.
- Separate, certified safety control, according to performance level D, machine directive.



OVERVIEW OF OUR AQUAJET® MODELS

Model	Plunger Ø	Operating pressure at max. speed	Flow rate	Engine Power	Pump Performance	Version <sup>1</sup>	Road going	Basic unit incl. fuel tank	Container version <sup>2</sup>	
AQUAJET® 140	144	17,5 mm	up to 19 l/min	160 kW	140 kW			2300 mm	2991 mm	
		19,3 mm	up to 23 l/min						2438 mm	
	20 mm	up to 2600 bar pressure level 1	up to 30 l/min						2140 mm	2725 mm incl. weather cap
		up to 2800 bar pressure level 2	up to 25 l/min							
	143	28 mm	up to 53 l/min							
142	33 mm	up to 75 l/min								
AQUAJET® 200	204	17,5 mm	up to 28 l/min	235 kW	200 kW			2608 mm	2911 mm	
		19,3 mm	up to 36 l/min						2438 mm	
	20 mm	up to 39 l/min								
	203	28 mm	up to 78 l/min						2184 mm	2740 mm incl. weather cap
	202	30 mm	up to 88 l/min							
33 mm		up to 111 l/min								
AQUAJET® 340	344	17,5 mm	up to 47 l/min	345 kW	300 kW			2950 mm	6058 mm	
		19,3 mm	up to 58 l/min						2438 mm	
	20 mm	up to 61 l/min								
	343	25 mm	up to 103 l/min						2536 mm	2758 mm incl. weather cap
		28 mm	up to 128 l/min							
342	33 mm	up to 182 l/min								
AQUAJET® 470	474	17,5 mm	up to 66 l/min	450 kW	400 kW			3970 mm <sup>4</sup>	6058 mm <sup>6</sup>	
		19,3 mm	up to 81 l/min						2438 mm	
	20 mm	up to 86 l/min								
	473	25 mm	up to 145 l/min						2200 mm	2780 mm
		28 mm	up to 180 l/min							
472	33 mm	up to 255 l/min								

CONTINUED ON NEXT PAGE





## OVERVIEW OF OUR AQUAJET® MODELS

Model	Plunger Ø	Operating pressure at max. speed	Flow rate	Engine Power	Pump Performance	Version <sup>1</sup>	Road going	Basic unit incl. fuel tank	Container version <sup>2</sup>	
AQUAJET® 500	504	28 mm	up to 3000 bar	571 kW	500 kW			3858 mm <sup>5</sup>	6058 mm <sup>6</sup>	
		35 mm	up to 2100 bar						2438 mm	
	503	40 mm	up to 1630 bar						up to 167 l/min	2710 mm
		45 mm	up to 1280 bar						up to 211 l/min	
	502	50 mm	up to 1040 bar						up to 263 l/min	11.400 kg
AQUAJET® 800	804	28 mm	up to 3000 bar	839 kW	800 kW			4191 mm	7450 mm	
		35 mm	up to 2000 bar						up to 204 l/min	2438 mm
	803	40 mm	up to 1560 bar						up to 278 l/min	2767 mm
		45 mm	up to 1230 bar						up to 351 l/min	
	802	50 mm	up to 1000 bar						up to 438 l/min	18.000 kg

### PLEASE NOTE:

The values given are for guidance and depend on many different factors, such as engine variants, equipment features as well as optional accessories and other components. If you have any questions, please contact your contact person at Hammelmann.

### DESCRIPTION OF THE TABLE

<sup>1</sup> Length, width, height, and weight may vary depending on the engine version.

<sup>2</sup> AQUAJET® units from the 140 and 200 series can be installed in a 10" container. AQUAJET® units from the 340 series onwards must be installed in a 20" or 25" container.

<sup>3</sup> Height without weather cap. Including the weather cap, the height is 2481 mm.

<sup>4</sup> Unit with 3-speed gearbox. Without gearbox the length is 3475 mm.

<sup>5</sup> Unit with 3-speed gearbox. Without gearbox the length is 3558 mm.

<sup>6</sup> Optionally available in a 25" container. The length is then 7450 mm.

<sup>7</sup> Weight without fuel tank. The unit is not mounted on a diesel tank plate. Please note: A separate diesel tank is required for this unit!



Road-going AQUAJET® 140



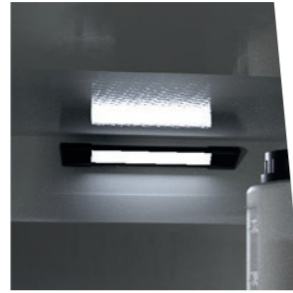
# EQUIPMENT FEATURES

Abstract. Further features on request.



## ES 4 CONTROL UNIT

The clever control guarantees full control of all parameters and impresses with a 10" touch display and intuitive operation. The control unit is sturdy enough for construction sites and can be operated with gloves!



## LED INTERIOR LIGHTING

Bright LED lights ensure a well-lit interior, even when the sun is already going down.



## TIER 5 INDUSTRIAL ENGINE

A powerful 6-cylinder diesel engine from a brand manufacturer is the driving force of the system and offers a lot of smoothness and high power reserves.



## ADBLUE®-SYSTEM

85% less nitrogen oxides, more environmental protection and lower fuel consumption.



## FULLY GALVANIZED CHASSIS

The rugged and fully galvanized chassis guarantees optimal mobility.



## LARGE SET OF TIRES

The large tires ensure good driving characteristics, higher ground clearance and better suspension of the system.



## STORAGE BOX

[OPTIONAL]  
The high-quality aluminum storage box on the drawbar offers plenty of space for accessories.



## FROST PROTECTION SYSTEM

[OPTIONAL]  
With the frost protection system, you can easily protect your system when the temperatures drop below freezing point.



## VICE

[OPTIONAL]  
Perfect for assembly work on-site, like changing of the water tools.



## 4-POINT LIFTING LUGS

[OPTIONAL]  
The 4-point lifting lugs allow the pump unit to be easily and precisely positioned at the place of use.



AQUAJET® 200 in 10'-Container





## CERTIFICATES

- ISO 9001:2015
- ISO 14001:2015
- ISO 45001:2018
- ISO 50001:2018
- ASME Certificate
- SIR Certificate
- Others



### The free Hammelmann app

For iOS, Android and your browser

**Water Jetting Calculator:** [hammelmann.com/app](http://hammelmann.com/app)

Hammelmann GmbH  
Carl-Zeiss-Straße 6-8  
D-59302 Oelde

+49 (0) 25 22 / 76 - 0  
mail@hammelmann.de  
www.hammelmann.com



**HAMMELMANN®**